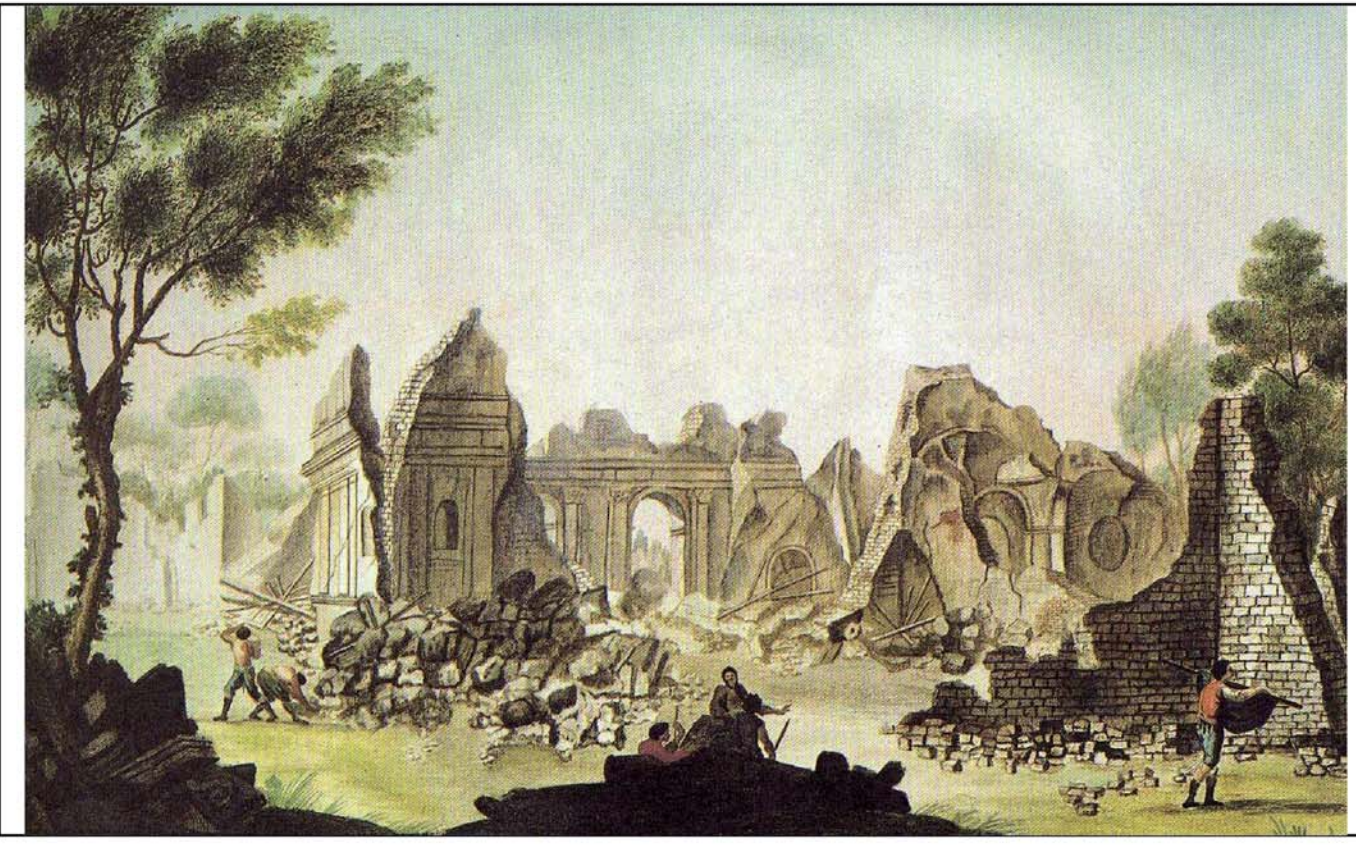


COMUNI DI
 ROSARNO - FEROLETO DELLA CHIESA
 LAUREANA DI BORRELLO - RIZZICONI - SERRATA
 SAN PIETRO DI CARIDA' - SAN CALOGERO
(Provincia di Reggio Calabria - Vibo Valentia)
 PIANO STRUTTURALE ASSOCIATO (P.S.A.)
 L.U.R. 16 aprile 2002, n. 19



PROFESSIONISTI INCARICATI

arch. Fulvio A. Nasso - Capogruppo
 arch. Giuseppe Lombardo
 prof. arch. Giuseppe Lonetti
 arch. Salvatore Sellaro
 arch. Salvatore Foti
 pian. Rocco Panetta
 arch. Rocco Virgilio
 arch. Francesco Mammola

prof. geol. Giuseppe Mandaglio
 geol. Michele Mandaglio
 ing. Ernesto Menzietti
 ing. Pasquale Penna
 dott. agr. Tommaso Calabrisi
 archeol. Maddalena Sica
 archeol. Francesca Pizzi
 dott. soc. Antonio Nasso

RESPONSABILE DEL PROCEDIMENTO
 ing. Alessandro Campisi

TAV
QAG
1

QUADRO CONOSCITIVO TERRITORIALE
 COMUNI DI ROSARNO, FEROLETO DELLA CHIESA,
 LAUREANA DI BORRELLO, RIZZICONI,
 SAN CALOGERO, SAN PIETRO DI CARIDA', SERRATA.
 STUDIO GEOMORFOLOGICO

RAPPORTO DI SCALA
 1:10000








DATA

CARTA GEOMORFOLOGICA

Legenda

Perimetrazione Frane

TIPOLOGIA

-  Colamento
-  Complessa
-  DGPV
-  Scorrimento
-  ZDSL
-  ZE1
-  ZFP
-  ZFS
-  Bacini idrografici

