

COMUNI DI  
 ROSARNO - FEROLETO DELLA CHIESA  
 LAUREANA DI BORRELLO - RIZZICONI - SERRATA  
 SAN PIETRO DI CARIDA' - SAN CALOGERO  
 (Province di Reggio Calabria e Vibo Valentia)  
 PIANO STRUTTURALE ASSOCIATO (P.S.A.)  
 L.U.R. 16 aprile 2002, n. 19



PROFESSIONISTI INCARICATI

arch. Fulvio A. Nasso - Capogruppo  
 arch. Giuseppe Lombardo  
 prof. arch. Giuseppe Lonetti  
 arch. Salvatore Sellaro  
 arch. Salvatore Foti  
 pian. Rocco Panetta  
 arch. Rocco Virgilio  
 arch. Francesco Mammola

prof. geol. Giuseppe Mandaglio  
 geol. Michele Mandaglio  
 ing. Ernesto Mensitieri  
 ing. Pasquale Penna  
 dott. agr. Tommaso Calabro  
 archeol. Maddalena Sica  
 archeol. Francesca Pizzi  
 dott. soc. Antonio Nasso

RESPONSABILE DEL PROCEDIMENTO  
 ing. Alessandra Campisi

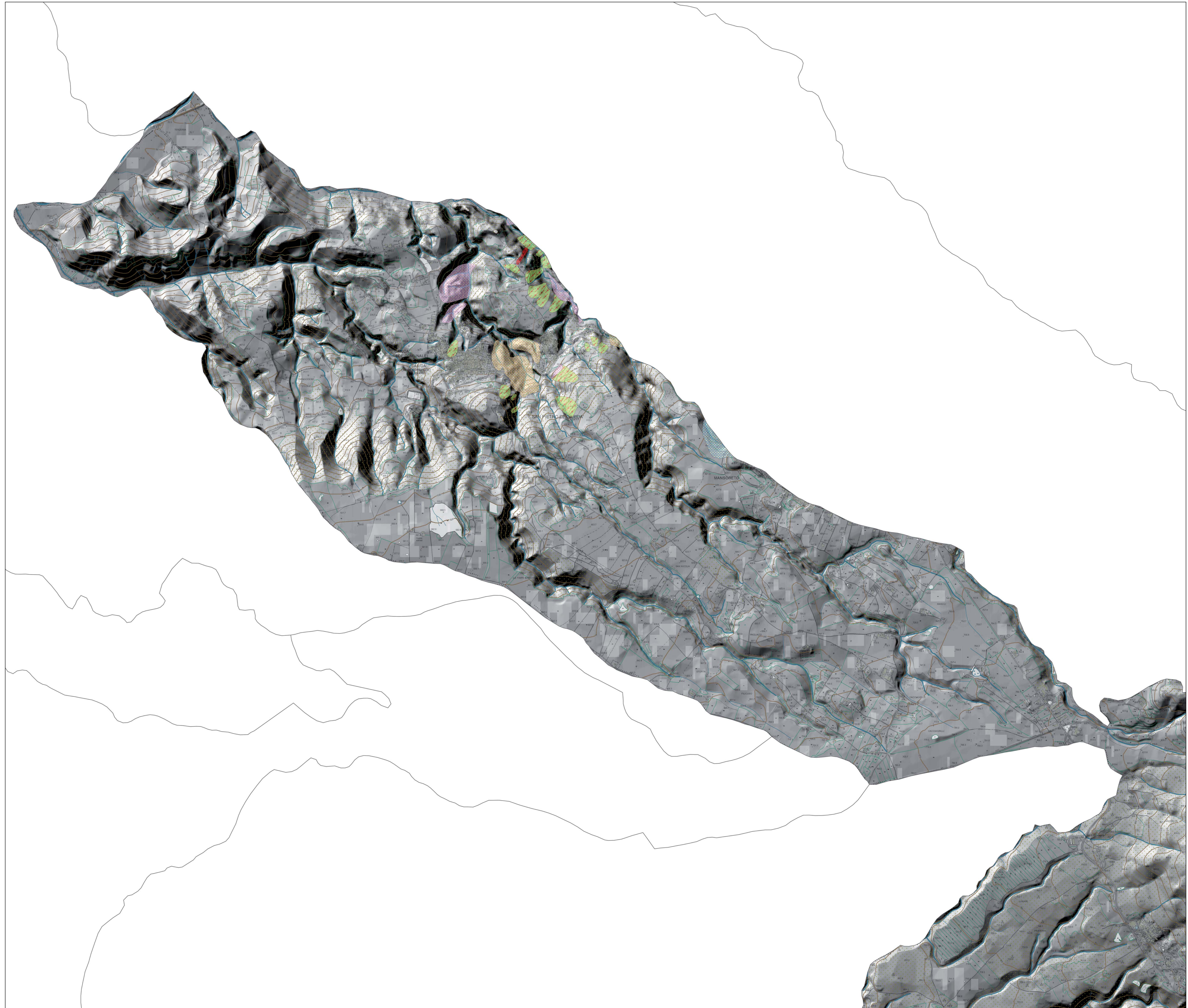
**TAV**  
**QAG**  
**1a**

QUADRO CONOSCITIVO TERRITORIALE  
 COMUNI DI ROSARNO, FEROLETO DELLA CHIESA,  
 LAUREANA DI BORRELLO, RIZZICONI,  
 SAN CALOGERO, SAN PIETRO DI CARIDA', SERRATA.  
**STUDIO GEOMORFOLOGICO**

RAPPORTO DI SCALA  
 1:10000

DATA









CARTA GEOMORFOLOGICA



Legenda

Perimetrazione Frane

TIPOLOGIA

-  Colamento
-  Complessa
-  DGPV
-  Scorrimento
-  ZDSL
-  ZEi
-  ZFP
-  ZFS